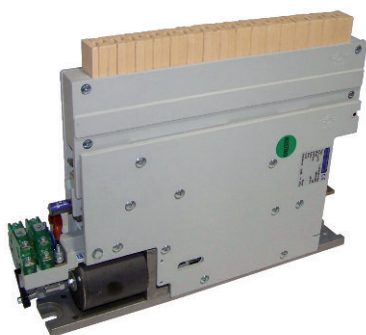


Switches



LTHH01001*A01

Type	LTHH 100
Number of Poles	1 NO
Mounting Position	Horizontal - Vertical
Control Voltage Rating [V _{dc}]	12 ÷ 220
Auxiliary Contact Blocks	Max 2 (1 NO + 1 NC)
Block Type*	SJ - LJ
Arc chute Material	Ceramic
Contact tips material*	S6

* For details please refer to dedicated technical note

Description

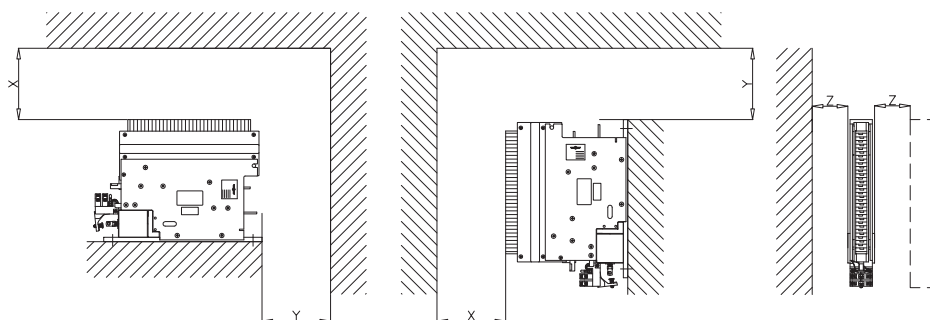
Contactor single interruption in air, electromagnetic control by full power coil. Single state functioning.

Reference standard IEC 60077.

Electrical Characteristics

Rated Operational Voltage [V _{ac} / V _{dc}]	3000
Max Operational Voltage [V _{ac} / V _{dc}]	4000
Rated Insulation Voltage [V]	4000
Conventional Free Air Thermal Current [A] at 75°C	100
DC-Rated Operational Current (τ=15ms) [A]	
3000V	135
1500V	280
DC-Maximum Breaking Capacity (τ=15ms) [A]	
3000V	150
1500V	300
AC-Maximum Breaking Capacity (cosφ=0,8; 50Hz) [A]	
3000V	180
1500V	360
Component Category / Operational Frequency Class	A2 / C3
Short Circuit Withstand Capacity for 5ms [kA]	4
Critical Current Range [A]	NONE
Fault Making Capacity [kA]	2.4
Blow Out Circuit Type	Indirect

Minimum clearances
from metal parts [mm]
X = 330; Y = 50 ; Z = 50



Switches

LTHH01001*A01

Mechanical Characteristics

Mechanical Endurance (cycles)	2x10 ⁶
Shock and Vibrations (IEC61373)	Cat.1 - Class B
Weight [kg]	6.5

Control Circuit

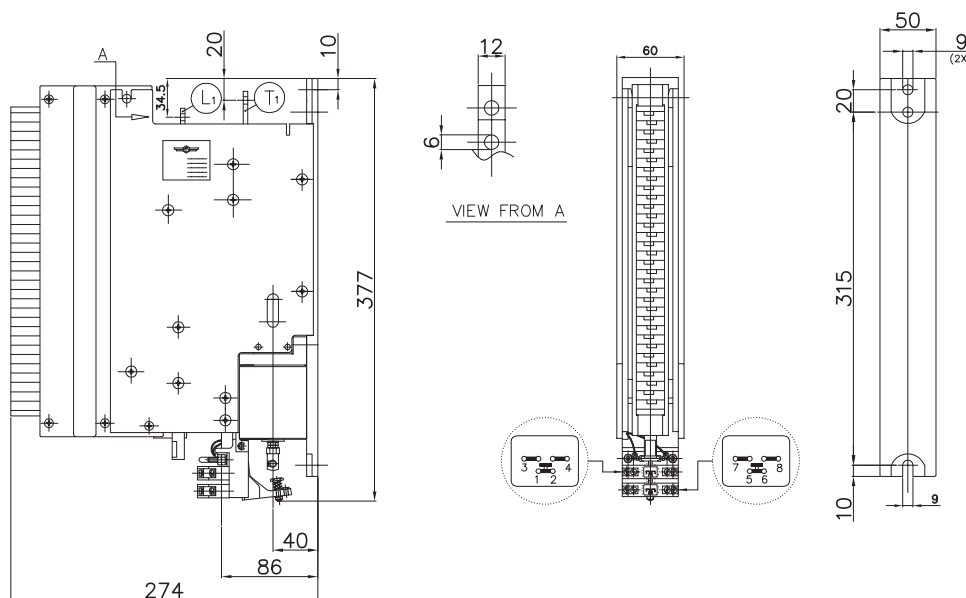
Control Voltage Range	0.7U _c ÷ 1.25U _c
Power Consumption (U _c and T = 20°C) at Pick Up - when Holding [W]	20 - 20
Mechanical Operation Time (U _c and T = 20°C) when Closing - Opening [ms]	90 - 25
Time Constant (L/R) at Pick Up - when Holding [ms]	25 - 75
Electrical Connections	Fast-On 6.35x0.8mm - Screw M4

Auxiliary Contacts

Tips material	Solid Silver (Gold plating opt)
Rated Operational Voltage [V _{ac} / V _{dc}]	250
Rated Current [A]	10
Minimum Switching Current at 16V _{dc} [mA]	20
Electrical Connections	Fast-On 6.35x0.8mm - Screw M3

Environmental Conditions

Stock Temperature Range	-50°C ÷ +85°C
Operational Temperature Range	-40°C ÷ +75°C
Pollution Degree - Overvoltage Category (EN 50124-1)	PD3 - OV3
Max Altitude without Performance Derating [m]	1500



Rev.02 11/2012

bitsadv.com